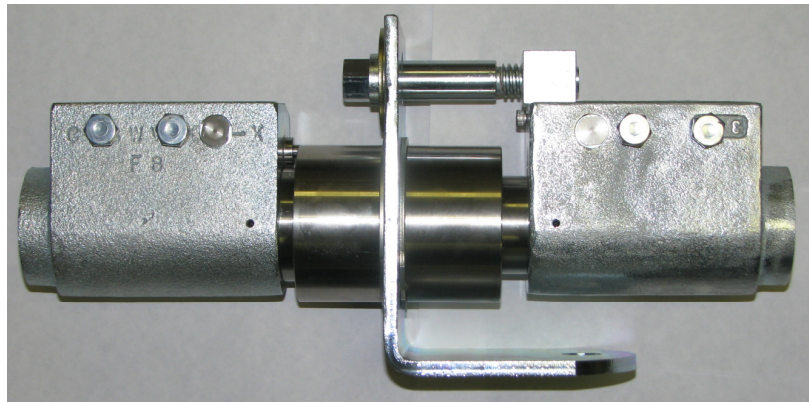


OPERATING AND INSTALLATION INSTRUCTIONS FOR THE A-SWV-125 & A-SWV-150-G HIGH FLOW TOOL BAR COUPLING



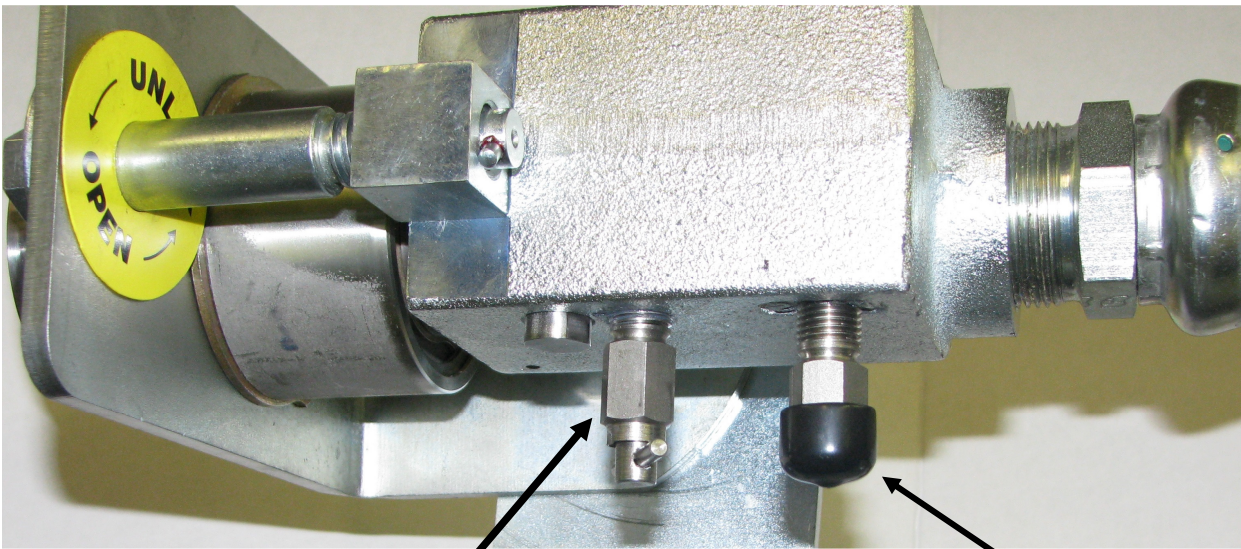
CAUTION  DANGER

PLEASE READ THIS ENTIRE MANUAL AND FOLLOW THE INSTRUCTIONS CAREFULLY. FAILURE TO READ AND FOLLOW ALL OF THE INSTRUCTIONS AND WARNINGS IN THIS MANUAL MIGHT RESULT IN A DANGEROUS RELEASE OF ANHYDROUS AMMONIA AND CAUSE SERIOUS BODILY INJURY.



A-SWV-125 & A-SWV-150-G BLEEDER VALVE AND HYDROSTAT INSTALLATION GUIDE

When installing a bleeder valve and hydrostatic relief valves into the female side of the breakaway coupling please follow the placement illustration below.



Install bleeder valve here hydrostatic relief valve here

TABLE OF CONTENTS

New installation instruction	page 3-5
Connection instructions	page 7-9
Disconnection instructions	page 9
Maintenance instructions	page 9-10

CAUTION **DANGER**

ALLWAYS FOLLOW MANUFACTURES INSTRUCTIONS WHEN INSTALLING, DISCONNECTING OR RECONNECTING THE QUICK COUPLING. FAILURE TO DO SO MAY CAUSE BODILY INJURY.

ALWAYS FOLLOW STEPS 1-3 BELOW BEFORE PERFORMING MAINTENANCE, INSTIALLATION, RECONNECTING OR DISCONNECTING THE QUICK COUPLING

- 1. ALLWAYS WEAR GOGGLES AND GLOVES AND HAVE EMERGENCY WATER AVAILABLE.**
- 2. CLOSE ALL VALVES.**
- 3. OPEN ALL BLEED VALVES AND DRAIN ALL OF THE AMMONIA FROM THE HOSES ATTACHED TO THE TANK AND THE APPLICATOR. ALWAYS BE CAREFUL WHEN OPENING A BLEED VALVE TO MAKE SURE THE OUTLET IS POINTING IN A SAFE DIRECTION AND AWAY FROM YOU OR ANYONE ELSE. DO NOT PROCEED UNTIL YOU HAVE MADE SURE ALL OF THE AMMONIA HAS BEEN DRAINED FROM ALL OF THE HOSES.**

DO NOT REMOVE OR REPOSITION THE BRACKETS. ALL THE BRACKETS IN THE ORIENTATION THEY ARE SUPPLIED IN MUST BE USED FOR THE COUPLER TO FUNCTION PROPERLY. IF ANY BRACKET IS REMOVED OR RE-ORIENTATED THE COUPLER WILL NOT WORK

NEW INSTALLATION INSTRUCTIONS

1. ALWAYS WEAR GOGGLES AND GLOVES AND HAVE EMERGENCY WATER AVAILABLE.
2. CLOSE ALL VALVES.
3. OPEN ALL BLEED VALVES AND DRAIN ALL OF THE AMMONIA FROM THE HOSES ATTACHED TO THE TANK AND THE APPLICATOR. **ALWAYS BE CAREFUL WHEN OPENING A BLEED VALVE TO MAKE SURE THE OUTLET IS POINTING IN A SAFE DIRECTION AND AWAY FROM YOU OR ANYONE ELSE. DO NOT PROCEED UNTIL YOU HAVE MADE SURE ALL OF THE AMMONIA HAS BEEN DRAINED FROM ALL OF THE HOSES.**
4. ATTACH THE MOUNTING CLAMP ON TO THE TOOL BAR BY DRILLING TWO 17/32 INCH HOLES ON 2" CENTERS. MAKE SURE IT IS MOUNTED ONTO A PORTION OF THE TOOL BAR THAT IS ATLEAST 1/4" THICK. ATTACH THE TWO 1/2" BOLTS AND NUTS SECURELY TO THE CLAMP AND TOOL BAR AND TIGHTEN FIRMLY. THE FEMALE SIDE OF THE COUPLING WILL ALREADY BE ATTACHED TO THE MOUNTING BRACKET BUT MAKE SURE THE COUPLING IS INSTALLED ON THE CORRECT SIDE OF THE BRACKET AS SHOWN IN THE PHOTO BELOW.

NOTE BRACKET ORIENTATION TOOL BAR SUPPORT BRACKET



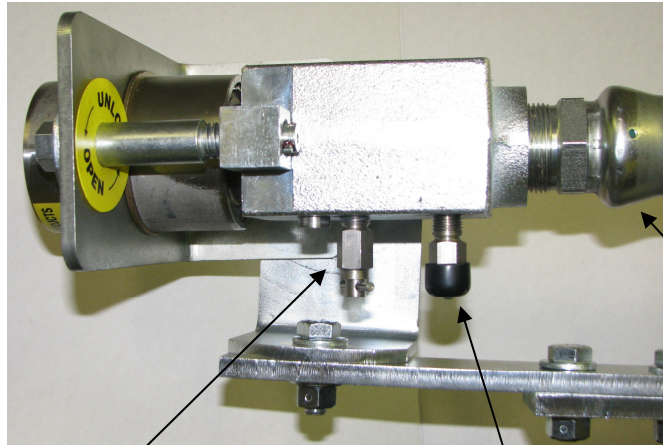
ATTACH THE TWO 1/2" BOLTS AND NUTS

DRILL TWO 17/32 INCH HOLES

DO NOT REMOVE OR REPOSITION BRACKETS

MAKE SURE YOU HAVE SUFFICIENT SLACK IN THE SECTION OF HOSE CONNECTING THE A-HFC-112-G TO THE APPLICATION EQUIPMENT MOUNTED ON THE TOOL BAR TO ALLOW SUFFICIENT ARTICULATION OF THE UNIT. 12"-18" IS NORMALLY ACCEPTABLE DEPENDING ON THE MOUNTING LOCATION OF THE FLOW CONTROL DEVICE. IF INSTALLING ONTO A SWING ARM 6" OF SLACK AS MEASURED BETWEEN THE INLET OF THE COUPLER AND HINGE POINT ON THE SWING ARE IS ACCEPTABLE

5. SCREW THE APPLICATOR HOSE INTO THE FEMALE END OF THE COUPLING AND MAKE SURE TO USE PIPE THREAD SEALANT AS SHOWN IN THE PHOTO BELOW



INSTALL BLEEDER VALVE HERE AND HYDROSTAT HERE HOSE TO METER HERE

6. IF YOUR SUPPLY HOSE IS ATTACHED TO THE NURSE TANK, SCREW AN ACME ADAPTOR INTO THE 1-1/4" FNPT OF THE MALE END OF THE COUPLING. IF YOUR SUPPLY HOSE IS ATTACHED TO THE TOOL BAR INSTALL THE HOSE INTO THE 1-1-4" FPT SIDE OF THE MALE END, SEE PHOTO BELOW.

**IF HOSE IS ATTACHED TO NURSE TANK INSTALL ACME FITTING HERE
WE RECOMMENDED INSTALLING A
BLEEDER VALVE & HYDROSTATE RELIEF VALVE HERE**



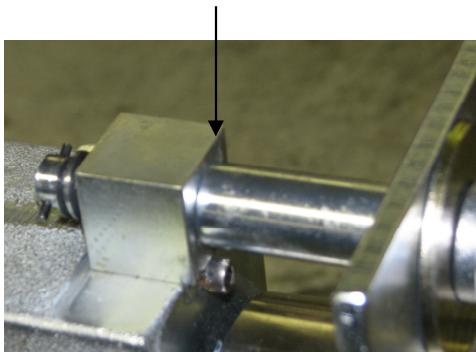
IF HOSE IS ATTACHED TO TOOL BAR INSTALL SUPPLY HOSE HERE

7. ATTACH THE OPERATING INSTRUCTION DECAL TO THE TOOL BAR AS CLOSE TO THE A-SWV AS POSSIBLE
8. ******IMPORTANT**** MAKE SURE THE BRACKET SWIVELS UP AND DOWN 20 DEGREES AND SIDE TO SIDE 80 DEGREES TO EACH SIDE OF CENTER LINE. THERE SHALL BE NOTHING OBSTRUCTING THE SWIVEL FEATURE OF THIS UNIT. DO NOT INSTALL ANY APPARATUS; HOSE SUPPORT ANYTHING ELSE THAT WILL IMPEDE THE MOVEMENT OF THE BREAKAWAY. THIS IS VERY IMPORTANT, IF IT DOES NOT SWIVEL UP AND DOWN AND SIDE TO SIDE THEN IT WILL NOT FUNCTION PROPERLY.**
9. AFTER YOU HAVE INSTALLED YOUR NEW COUPLING SEE THE “CONNECTION INSTRUCTIONS” SECTION BELOW TO CONNECT THE MALE END.

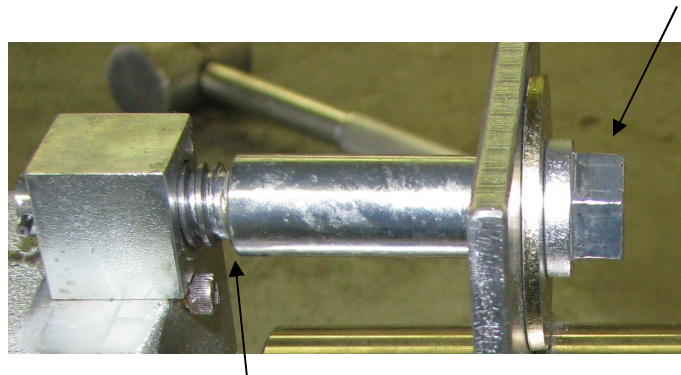
CONNECTION INSTRUCTIONS

1. ALWAYS WEAR GOGGLES AND GLOVES AND HAVE EMERGENCY WATER AVAILABLE.
2. CLOSE ALL VALVES.
3. OPEN ALL BLEED VALVES AND DRAIN ALL OF THE AMMONIA FROM THE HOSES ATTACHED TO THE TANK AND THE APPLICATOR. **ALWAYS BE CAREFUL WHEN OPENING A BLEED VALVE TO MAKE SURE THE OUTLET IS POINTING IN A SAFE DIRECTION AND AWAY FROM YOU OR ANYONE ELSE. DO NOT PROCEED UNTIL YOU HAVE MADE SURE ALL OF THE AMMONIA HAS BEEN DRAINED FROM ALL OF THE HOSES.**
4. OPEN THE UNIT BY TURNING THE LOCKING BOLT CLOCKWISE USING A 3/4" WRENCH UNTIL IT STOPS AT THE SHOULDER OF THE BOLT. SEE PHOTO BELOW

BOLT SHOULDER OPEN MAINTENTANCE POSITION

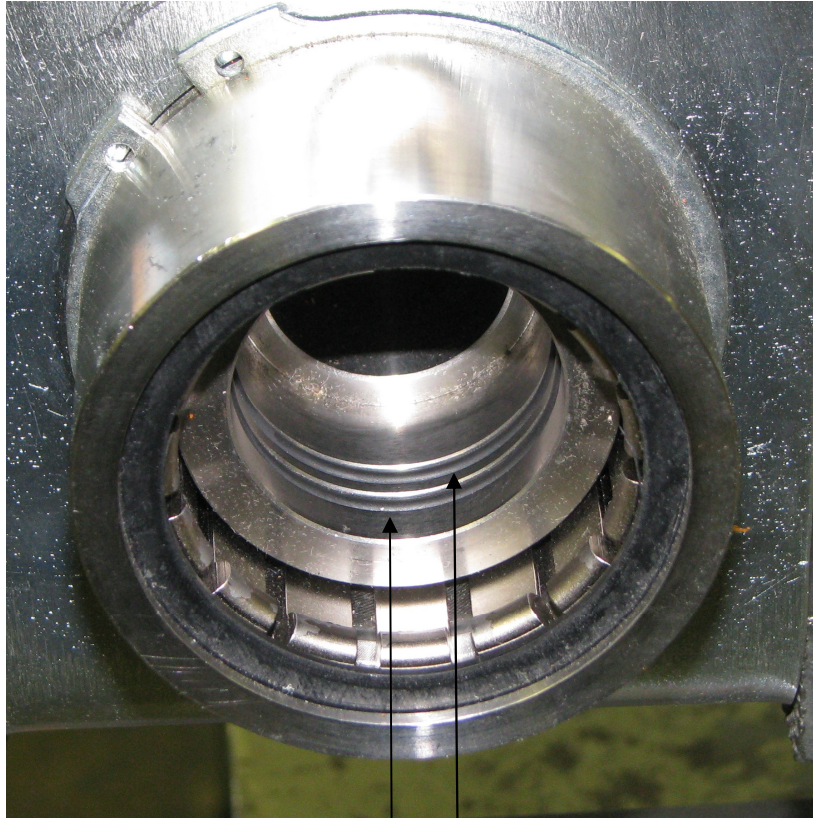


3/4" WRENCH GOES HERE



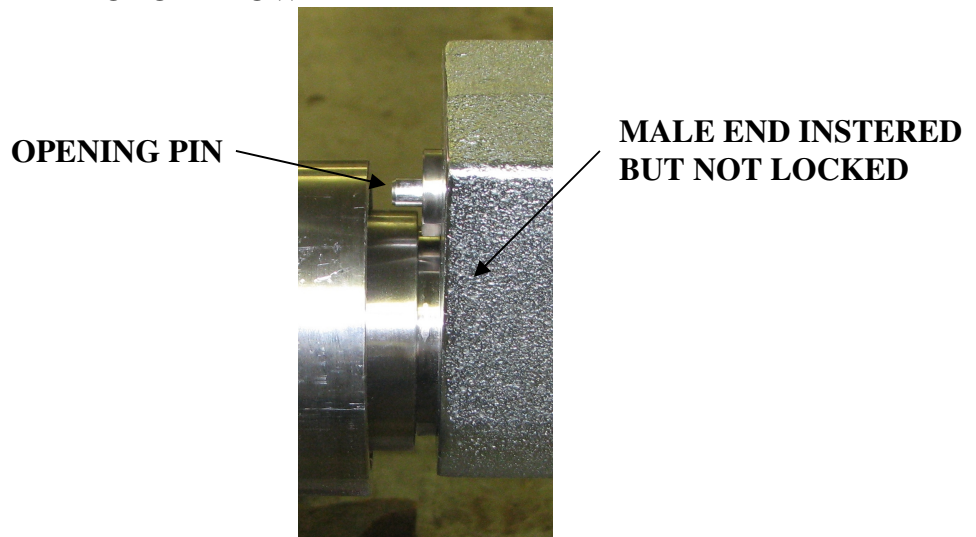
BOLT SHOULDER IN CLOSED POSITION READY FOR AMMONIA

5. INSPECT THE ORINGS TO MAKE SURE THEY ARE IN GOOD CONDITION. **NEVER LOOK DIRECTLY INTO THE OPENING OF THE MALE OR FEMALE SIDE OF THE QUICK COUPLING. HOLD IT AT AN ANGLE AWAY FROM YOU TO DO THE INSPECTION SO IF ANY AMMONIA IS LEFT IN THE HOSE IT WILL NOT SPRAY ON YOU OR ANYONE ELSE. GREASE O-RINGS IF NECESSARY. SEE PHOTO BELOW**



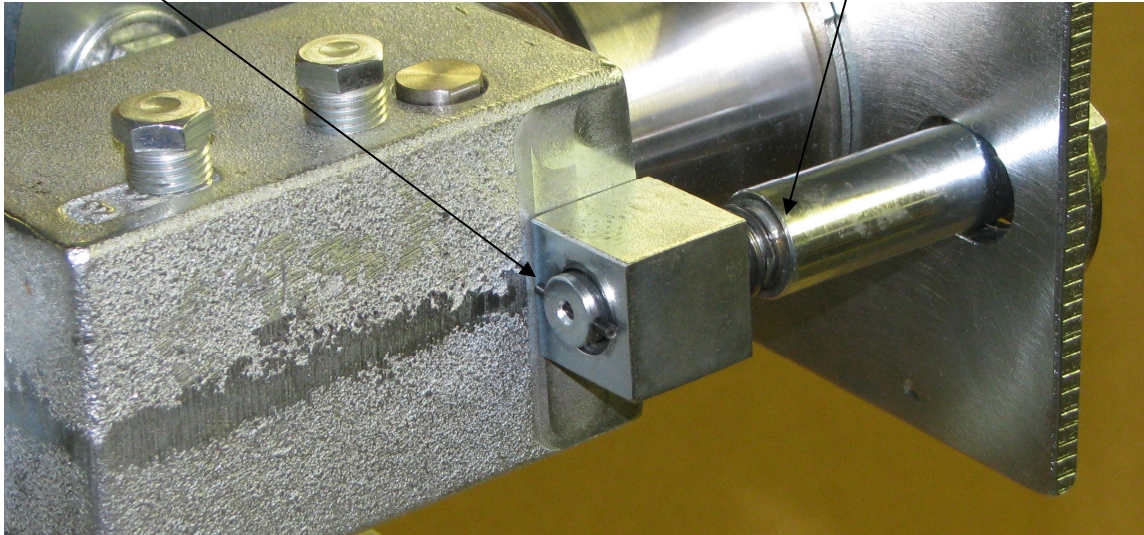
2 O-RINGS

6. INSERT MALE END INTO THE FEMALE END FIRMLY UNTIL YOU HEAR A CLICK. IT WILL LOOK LIKE THE PHOTO BELOW



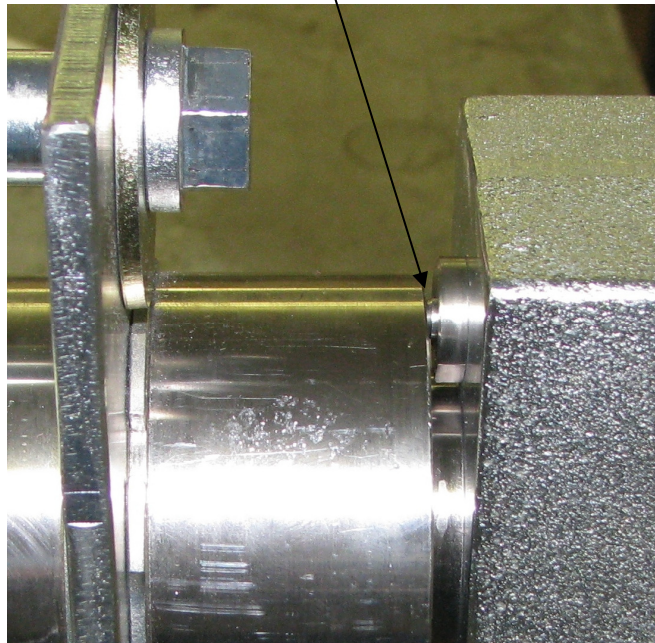
- 7. CLOSE THE UNIT BY TURNING THE LOCKING BOLT COUNTER CLOCKWISE UNTIL THE BOLT HITS THE STOPPING PIN. SEE PHOTO BELOW.**

STOPPING PIN OR WASHER IN CLOSED POSITION NOTE SHOULDER BOLT POSITION



- 8. TO VERIFY THE UNIT IS INSERTED CORRECTLY AND READY FOR USE MAKE SURE THE OPENING PIN IS DEPRESSED INTO THE OPENING PIN BONNET. SEE PHOTO BELOW**

OPENING PIN DEPRESSED INTO BONNET



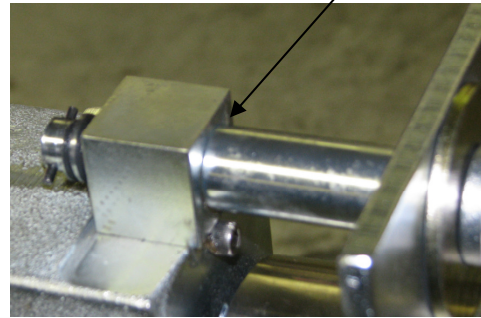
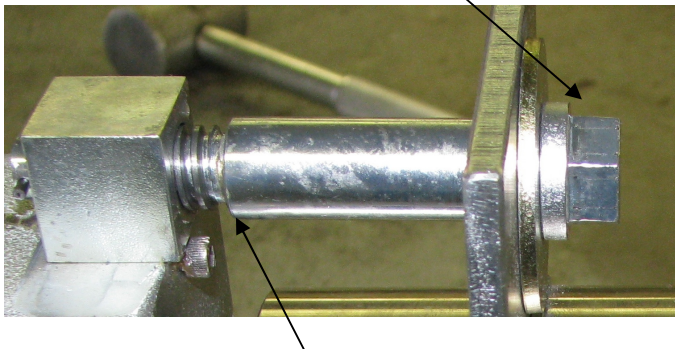
- 9. SHAKE HOSE TO MAKE SURE IT IS SECURELY ATTACHED.**

- 10. CLOSE ALL BLEED VALVES**

DISCONNECTION INSTRUCTIONS

1. ALWAYS WEAR GOGGLES AND GLOVES AND HAVE EMERGENCY WATER AVAILABLE.
2. CLOSE ALL VALVES.
3. OPEN ALL BLEED VALVES AND DRAIN ALL OF THE AMMONIA FROM THE HOSES ATTACHED TO THE TANK AND THE APPLICATOR. **ALWAYS BE CAREFUL WHEN OPENING A BLEED VALVE TO MAKE SURE THE OUTLET IS POINTING IN A SAFE DIRECTION AND AWAY FROM YOU OR ANYONE ELSE. DO NOT PROCEED UNTIL YOU HAVE MADE SURE ALL OF THE AMMONIA HAS BEEN DRAINED FROM ALL OF THE HOSES.**
4. OPEN THE UNIT BY TURNING THE LOCKING BOLT CLOCKWISE USING A 3/4" WRENCH UNTIL THE OPENING BOLD STOPS ON THE SHOULDER OF THE BOLT. SEE PHOTO BELOW

3/4" WRENCH GOES HERE BOLT SHOULDER IN OPEN "UNLOCKED" POSITION



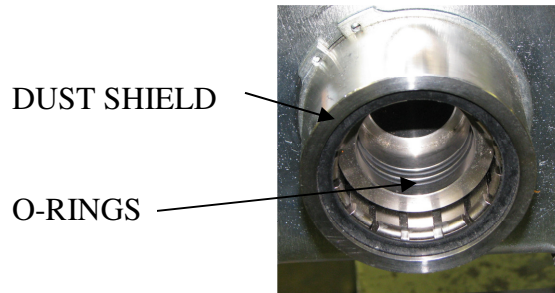
BOLT SHOULDER IN CLOSED "LOCKED" READY FOR USE POSITION

5. GRAB THE MALE END AND PULL FIRMLY.

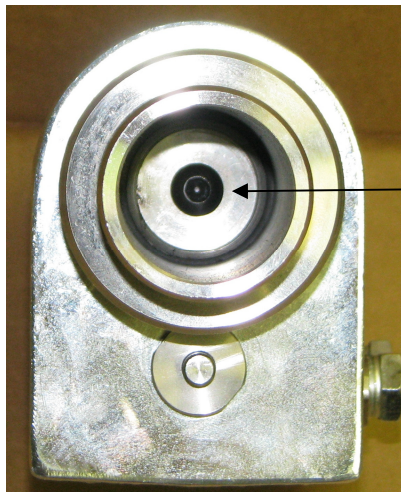
MAINTENANCE INSTRUCTIONS

1. ALWAYS WEAR GOGGLES AND GLOVES AND HAVE EMERGENCY WATER AVAILABLE.
2. CLOSE ALL VALVES.
3. OPEN ALL BLEED VALVES AND DRAIN ALL OF THE AMMONIA FROM THE HOSES ATTACHED TO THE TANK AND THE APPLICATOR. **ALWAYS BE CAREFUL WHEN OPENING A BLEED VALVE TO MAKE SURE THE OUTLET IS POINTING IN A SAFE DIRECTION AND AWAY FROM YOU OR ANYONE ELSE. DO NOT PROCEED UNTIL YOU HAVE MADE SURE ALL OF THE AMMONIA HAS BEEN DRAINED FROM ALL OF THE HOSES.**
4. PERFORM MAINTENANCE BEFORE AND AFTER EACH SEASON.
5. Check valve regularly for leaks and wear.
6. Keep valve clean and free from debris

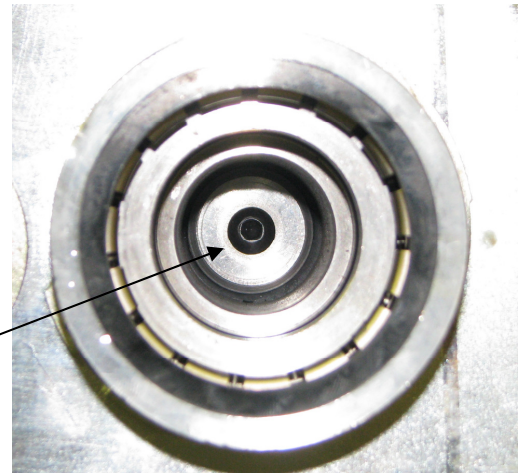
- 7. If leaking from pipe thread try tightening with appropriate wrench, if this fails replace valve immediately.
- 8. Inspect the O-rings SWV-129-TI, and dust shield gasket SWV-24 between male and female coupling. If they are wore install new and or dust shield. Alternately you can purchase the complete repair kit A-SWV-125-RK and they will come with it, or replace valve immediately. See photo below



- 9. Inspect the check valve seat in both male and female end for wear and leakage. Replace them if necessary. Push on both male and female swing valve check seats to make sure they swing in and out and that they spring back correctly. See photo below

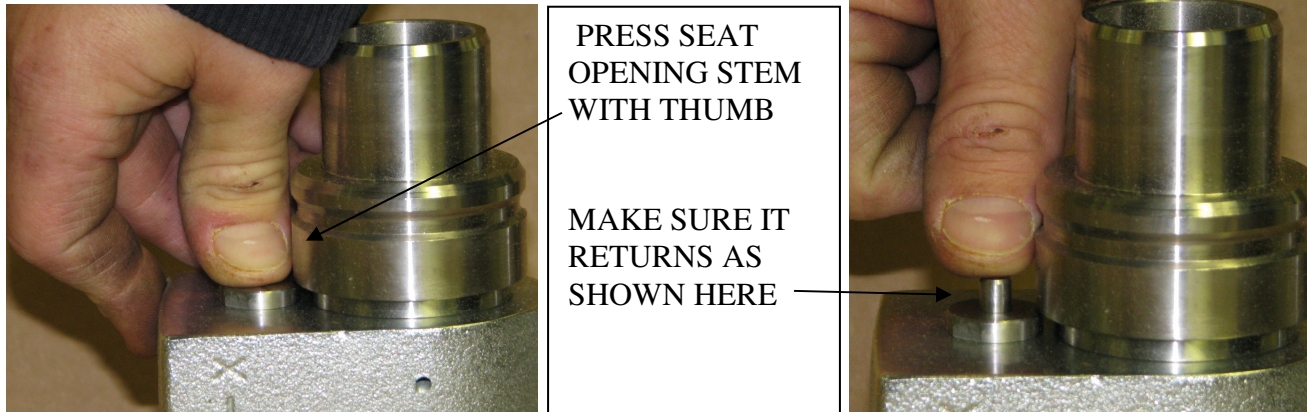


MALE END PUSH HERE



FEMALE END PUSH HERE

10. Inspect the seat opening pin to make sure its functioning properly. Depress the seat opening pin into the bonnet and observe the pin to make sure it returns. If it doesn't return and is stuck disassemble the bonnet and inspect and or replace the o-ring, re-install the bonnet and check it again to make sure it's functioning properly. See photo below



11. If valve leaks from the swing hinge bolt on the side of the male and female end call Continental for a factory repair request and ship the coupler back to us for repair. The o-ring inside the swing hinge bolt is very difficult to replace and therefore must be replaced at the factory. See photo below.



12. Before and after each season disconnect the male end from the female end. Clean unit of any degree, inspect and grease the o-rings, replace them if necessary and re-install the male end. Doing this increases the life and reliability of the coupler.

**IF YOU HAVE ANY QUESTIONS PLEASE CALL US AT
800-537-5642**